

# CASE STUDY

## Always connected workplace with SD-WAN

بنك  
مصر  
لبنان **BML**

## WAN of the future, TODAY!

<https://bml.com.lb/>

*“With Cisco SD-WAN, we have reduced our WAN spending while enhancing both applications performance and WAN administration”, said Tony AWAD – Technical Manager at BML.*

### Executive Summary

Banque Misr Liban leveraged Cisco SD-WAN in order to deliver better applications performance, availability and security to their branches, ending-up with better clients' experience.

### Challenges

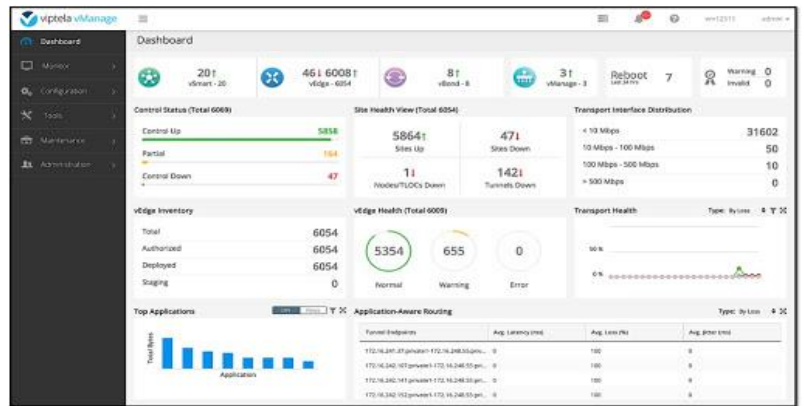
- Poor WAN performance and inefficient usage of expensive links
- Decentralized and complex routers configuration through command line
- Hard troubleshooting and difficult problems detection
- Lack of reporting about applications health, bandwidth utilization and traffic visibility
- Absence of enterprise grade security services across the WAN

## Solution

As part of their digital transformation strategy, BML deployed Cisco SD-WAN including redundant on-premises virtual controllers for centralized management and policies enforcement, in addition to routers to act as the data plane.

## Results and Return on Investment

- Centralized management, applications health, quality of experience reports & analytics via GUI
- Dramatical enhancement in WAN performance through application aware routing
- Effective usage of multiple links and OPEX reduction
- Secure WAN fabric via the integrated next generation security features
- Faster and easier troubleshooting



Reach out to us!

+961 1 983 111

info@cns.com.lb

2nd floor, Arab bank bldg., Bank Street,  
DownTown, Beirut, Lebanon